

# PH SERIES HOT WATER COIL DATA

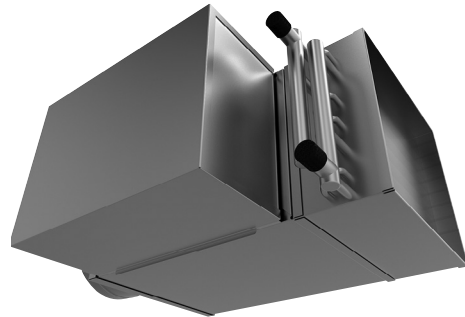
## HOT WATER COILS

When ordered with the air terminal, the hot water coil is shipped attached to the discharge of the terminal casing via slip and drive connections. The discharge end of the casing has slip and drive connections for easy connection to downstream ductwork. The hot water coil is constructed of aluminum fin and copper serpentine-type tubes with male sweat connections tested at 300 psig.

Coil selection may be made using Performance Aire Terminal Selection Software. Contact your Performance Aire representative for a copy. In the interest of energy conservation and due to the possibility of condensation, all hot water coils are marked, "Coil must be externally insulated after installation in the field." Hot water coils are tested in accordance to AHRI. Options, at an additional charge on hot water coils, include access doors for inspection and cleaning, and inlet/outlet on opposite sides of coils.

## HOT WATER COIL CONSTRUCTION DETAILS

- Hot water coils are factory mounted on the discharge of the terminal and are available with an optional integral coil access door.
- Coils are enclosed in 20 gauge coated steel casing with slip and drive connection.
- Fins are rippled and sine wave type constructed from heavy gauge aluminum, mechanically bonded to the tubes.
- Tubes are copper with a minimum wall thickness of 0.016" with male solder header connections.
- Coils are leak tested to 300 psig with minimum burst of 2000 psig at ambient temperature.
- Coil performance data is based on tests run in accordance with AHRI standard 410; coils are AHRI certified and include AHRI label.



---

All accessories that can be attached to the Single Duct Boxes are not a part of the AHRI certification program but ratings can be affected by their use.

---

| Coil Connection Size, Inches (mm) |             |             |
|-----------------------------------|-------------|-------------|
| PH Size                           | 1 Row       | 2 Row       |
| 04 / 05 / 06                      | 5/8" (15.8) | 7/8" (22.2) |
| 08                                | 5/8" (15.8) | 7/8" (22.2) |
| 10                                | 5/8" (15.8) | 7/8" (22.2) |
| 12                                | 7/8" (22.2) | 7/8" (22.2) |
| 14                                | 5/8" (15.8) | 7/8" (22.2) |
| 16                                | 5/8" (15.8) | 7/8" (22.2) |
| 20                                | 7/8" (22.2) | 7/8" (22.2) |
| 24                                | 7/8" (22.2) | 7/8" (22.2) |

All coils have 10 fins/inch with the exception of 3&4 row coils on 20 & 24 boxes which are 8 FPI.

**PH SERIES HOT WATER COILS MBH SELECTION DATA - IMPERIAL UNITS**

| Unit Size      | Rows | Connection OD (in) | GPM         | Head Loss (ft-H <sub>2</sub> O) | CFM  |      |      |      |      |      |      |      |
|----------------|------|--------------------|-------------|---------------------------------|------|------|------|------|------|------|------|------|
|                |      |                    |             |                                 | 100  | 200  | 300  | 350  | 400  | 450  | 500  | 600  |
| 04<br>05<br>06 | 1    | 0.625              | 1           | 0.46                            | 5.1  | 7.2  | 8.6  | 9.1  | 9.6  | 10.0 | 10.3 | 11.0 |
|                |      |                    | 2           | 1.76                            | 5.4  | 7.8  | 9.5  | 10.1 | 10.7 | 11.2 | 11.7 | 12.5 |
|                |      |                    | 3           | 3.86                            | 5.5  | 8.1  | 9.8  | 10.5 | 11.2 | 11.7 | 12.2 | 13.2 |
|                |      |                    | 4           | 6.73                            | 5.6  | 8.2  | 10.0 | 10.7 | 11.4 | 12.0 | 12.6 | 13.5 |
|                |      |                    | Airsides Ps |                                 | 0.01 | 0.04 | 0.07 | 0.10 | 0.12 | 0.15 | 0.18 | 0.24 |
| 04<br>05<br>06 | 2    | 0.875              | 1           | 0.12                            | 7.5  | 11.1 | 13.4 | 14.3 | 15.0 | 15.7 | 16.3 | 17.3 |
|                |      |                    | 2           | 0.46                            | 8.1  | 12.5 | 15.5 | 16.8 | 17.8 | 18.8 | 19.7 | 21.2 |
|                |      |                    | 4           | 1.75                            | 8.4  | 13.4 | 17.0 | 18.4 | 19.8 | 21.0 | 22.1 | 24.1 |
|                |      |                    | 6           | 3.84                            | 8.5  | 13.7 | 17.5 | 19.1 | 20.6 | 21.9 | 23.1 | 25.2 |
|                |      |                    | Airsides Ps |                                 | 0.03 | 0.08 | 0.16 | 0.21 | 0.26 | 0.32 | 0.38 | 0.51 |
| Unit Size      | Rows | Connection OD (in) | GPM         | Head Loss (ft-H <sub>2</sub> O) | CFM  |      |      |      |      |      |      |      |
|                |      |                    |             |                                 | 500  | 600  | 700  | 800  | 1000 | 1200 | 1400 | 1600 |
| 08             | 1    | 0.625              | 1           | 0.63                            | 12.1 | 12.9 | 13.5 | 14.1 | 15.1 | 15.9 | 16.5 | 17.1 |
|                |      |                    | 2           | 2.39                            | 13.7 | 14.7 | 15.6 | 16.4 | 17.7 | 18.8 | 19.7 | 20.5 |
|                |      |                    | 3           | 5.24                            | 14.3 | 15.4 | 16.4 | 17.3 | 18.8 | 20.1 | 21.1 | 22.1 |
|                |      |                    | 4           | 9.14                            | 14.7 | 15.9 | 16.9 | 17.9 | 19.5 | 20.8 | 21.9 | 22.9 |
|                |      |                    | Airsides Ps |                                 | 0.11 | 0.15 | 0.19 | 0.24 | 0.36 | 0.49 | 0.64 | 0.81 |
| 08             | 2    | 0.875              | 1           | 0.17                            | 18.6 | 19.8 | 20.9 | 21.7 | 22.5 | 23.1 | 25.1 | —    |
|                |      |                    | 2           | 0.63                            | 22.5 | 24.3 | 25.9 | 27.3 | 28.5 | 29.6 | 33.0 | —    |
|                |      |                    | 4           | 2.39                            | 25.1 | 27.5 | 29.6 | 31.5 | 33.1 | 34.6 | 39.4 | —    |
|                |      |                    | 6           | 5.22                            | 26.2 | 28.8 | 31.1 | 33.2 | 35.1 | 36.7 | 42.2 | —    |
|                |      |                    | Airsides Ps |                                 | 0.23 | 0.32 | 0.41 | 0.51 | 0.62 | 0.74 | 1.31 | —    |

**PH SERIES HOT WATER COILS MBH SELECTION DATA IMPERIAL UNITS**  
 (continued)

| Unit Size | Rows | Connection OD (in) | GPM         | Head Loss (ft-H <sub>2</sub> O) | CFM  |      |      |      |      |      |      |      |
|-----------|------|--------------------|-------------|---------------------------------|------|------|------|------|------|------|------|------|
|           |      |                    |             |                                 | 500  | 600  | 700  | 800  | 1000 | 1200 | 1400 | 1600 |
| 10        | 1    | 0.625              | 1           | 0.11                            | 13.4 | 14.3 | 15.0 | 15.6 | 16.7 | 17.5 | 18.2 | 18.7 |
|           |      |                    | 2           | 0.43                            | 15.7 | 16.9 | 17.9 | 18.8 | 20.4 | 21.6 | 22.7 | 23.6 |
|           |      |                    | 4           | 1.63                            | 17.2 | 18.6 | 19.9 | 21.1 | 23.0 | 24.7 | 26.0 | 27.3 |
|           |      |                    | 6           | 3.58                            | 17.8 | 19.3 | 20.7 | 22.0 | 24.1 | 25.9 | 27.5 | 28.8 |
|           |      |                    | Airsides Ps |                                 | 0.06 | 0.08 | 0.10 | 0.13 | 0.19 | 0.25 | 0.33 | 0.42 |
| 10        | 2    | 0.875              | 1           | 0.36                            | 20.5 | 21.9 | 23.0 | 24.0 | 25.5 | 26.7 | 27.7 | 28.5 |
|           |      |                    | 2           | 1.43                            | 25.2 | 27.4 | 29.3 | 30.9 | 33.6 | 35.8 | 37.6 | 39.1 |
|           |      |                    | 3           | 3.20                            | 27.3 | 29.9 | 32.2 | 34.2 | 37.6 | 40.4 | 42.8 | 44.8 |
|           |      |                    | 4           | 5.68                            | 28.5 | 31.4 | 34.0 | 36.2 | 40.0 | 43.2 | 46.0 | 48.3 |
|           |      |                    | Airsides Ps |                                 | 0.12 | 0.17 | 0.22 | 0.27 | 0.39 | 0.54 | 0.69 | 0.87 |
| Unit Size | Rows | Connection OD (in) | GPM         | Head Loss (ft-H <sub>2</sub> O) | CFM  |      |      |      |      |      |      |      |
|           |      |                    |             |                                 | 800  | 1000 | 1200 | 1400 | 1600 | 1800 | 2000 | 2200 |
| 12        | 1    | 0.875              | 2           | 0.54                            | 22.2 | 24.1 | 25.7 | 27.1 | 28.2 | 29.3 | 30.2 | 31.0 |
|           |      |                    | 4           | 2.07                            | 24.8 | 27.3 | 29.4 | 31.2 | 32.7 | 34.1 | 35.4 | 36.5 |
|           |      |                    | 6           | 4.53                            | 25.9 | 28.6 | 30.9 | 32.9 | 34.6 | 36.2 | 37.6 | 38.9 |
|           |      |                    | 8           | 7.90                            | 26.5 | 29.3 | 31.7 | 33.8 | 35.7 | 37.4 | 38.9 | 40.3 |
|           |      |                    | Airsides Ps |                                 | 0.07 | 0.11 | 0.15 | 0.19 | 0.24 | 0.30 | 0.36 | 0.42 |
| 12        | 2    | 0.875              | 2           | 0.33                            | 34.1 | 37.2 | 39.7 | 41.7 | 43.4 | 46.2 | 47.3 | 48.4 |
|           |      |                    | 4           | 1.30                            | 40.4 | 44.9 | 48.7 | 51.8 | 54.6 | 59.2 | 61.2 | 62.9 |
|           |      |                    | 6           | 2.89                            | 43.1 | 48.3 | 52.7 | 56.5 | 59.9 | 65.5 | 67.9 | 70.1 |
|           |      |                    | 8           | 5.10                            | 44.6 | 50.3 | 55.1 | 59.2 | 62.9 | 69.2 | 71.9 | 74.4 |
|           |      |                    | Airsides Ps |                                 | 0.16 | 0.23 | 0.32 | 0.41 | 0.51 | 0.74 | 0.87 | 1.01 |

**PH SERIES HOT WATER COILS MBH SELECTION DATA IMPERIAL UNITS**  
 (continued)

| Unit Size | Rows | Connection OD (in) | GPM        | Head Loss (ft-H <sub>2</sub> O) | CFM  |      |      |      |       |       |       |       |
|-----------|------|--------------------|------------|---------------------------------|------|------|------|------|-------|-------|-------|-------|
|           |      |                    |            |                                 | 600  | 700  | 800  | 1000 | 1500  | 2000  | 2500  | 3000  |
| 14        | 1    | 0.625              | 1          | 0.20                            | 19.8 | 21.9 | 22.7 | 23.5 | 26.3  | 28.2  | 29.5  | 30.6  |
|           |      |                    | 2          | 0.74                            | 23.4 | 26.6 | 27.9 | 29.1 | 33.6  | 36.9  | 39.3  | 41.3  |
|           |      |                    | 3          | 3.36                            | 25.9 | 29.8 | 31.4 | 33.0 | 37.1  | 41.1  | 44.2  | 46.8  |
|           |      |                    | 4          | 6.17                            | 26.8 | 31.1 | 32.9 | 34.6 | 39.1  | 43.6  | 47.1  | 50.1  |
|           |      |                    | Airside Ps | 0.02                            | 0.04 | 0.05 | 0.06 | 0.11 | 0.19  | 0.27  | 0.37  |       |
| 14        | 2    | 0.875              | 2          | 0.39                            | 34.4 | 39.4 | 41.4 | 43.3 | 50.1  | 54.7  | 58.0  | 60.6  |
|           |      |                    | 4          | 1.52                            | 39.7 | 46.6 | 49.6 | 52.3 | 63.0  | 70.7  | 76.6  | 81.4  |
|           |      |                    | 6          | 3.36                            | 41.8 | 49.7 | 53.1 | 56.2 | 68.9  | 78.4  | 85.8  | 91.9  |
|           |      |                    | 8          | 5.84                            | 43.0 | 47.4 | 51.3 | 58.4 | 72.3  | 82.9  | 91.3  | 98.2  |
|           |      |                    | Airside Ps | 0.05                            | 0.09 | 0.10 | 0.12 | 0.24 | 0.39  | 0.57  | 0.78  |       |
| Unit Size | Rows | Connection OD (in) | GPM        | Head Loss (ft-H <sub>2</sub> O) | CFM  |      |      |      |       |       |       |       |
|           |      |                    |            |                                 | 1000 | 1500 | 2000 | 2500 | 3000  | 3500  | 4000  | 4200  |
| 16        | 1    | 0.625              | 1          | 0.23                            | 25.4 | 28.5 | 30.5 | 32.0 | 33.2  | 34.1  | 34.8  | 35.1  |
|           |      |                    | 2          | 0.86                            | 31.6 | 36.7 | 40.3 | 43.1 | 45.3  | 47.1  | 48.7  | 49.2  |
|           |      |                    | 4          | 3.25                            | 35.9 | 42.8 | 47.9 | 51.9 | 55.3  | 58.1  | 60.5  | 61.4  |
|           |      |                    | 6          | 7.12                            | 37.6 | 45.3 | 51.1 | 55.8 | 59.7  | 63.0  | 65.9  | 66.9  |
|           |      |                    | Airside Ps | 0.04                            | 0.08 | 0.14 | 0.20 | 0.27 | 0.36  | 0.45  | 0.49  |       |
| 16        | 2    | 0.875              | 2          | 0.41                            | 46.2 | 53.7 | 58.8 | 62.4 | 65.2  | 67.5  | 69.3  | 69.9  |
|           |      |                    | 4          | 1.59                            | 55.8 | 67.8 | 76.4 | 83.0 | 88.4  | 92.7  | 96.5  | 97.8  |
|           |      |                    | 6          | 2.52                            | 60.0 | 74.2 | 84.8 | 93.1 | 100.0 | 105.8 | 110.8 | 112.6 |
|           |      |                    | 8          | 6.21                            | 62.3 | 77.9 | 89.7 | 99.2 | 107.1 | 113.8 | 119.6 | 121.7 |
|           |      |                    | Airside Ps | 0.09                            | 0.18 | 0.29 | 0.42 | 0.57 | 0.74  | 0.93  | 1.01  |       |

**PH SERIES HOT WATER COILS MBH SELECTION DATA IMPERIAL UNITS**  
 (continued)

| Unit Size | Rows | Connection OD (in) | GPM        | Head Loss (ft-H <sub>2</sub> O) | CFM   |       |       |       |       |       |       |       |
|-----------|------|--------------------|------------|---------------------------------|-------|-------|-------|-------|-------|-------|-------|-------|
|           |      |                    |            |                                 | 2000  | 2500  | 3000  | 3500  | 4000  | 4500  | 5000  | 5500  |
| 20        | 1    | 0.875              | 2          | 0.33                            | 43.8  | 46.7  | 49.0  | 50.9  | 52.4  | 53.8  | 54.9  | 55.9  |
|           |      |                    | 4          | 1.30                            | 54.0  | 58.5  | 62.3  | 65.4  | 68.1  | 70.5  | 72.6  | 74.4  |
|           |      |                    | 6          | 2.89                            | 58.6  | 64.0  | 68.5  | 72.4  | 75.7  | 78.7  | 81.3  | 83.7  |
|           |      |                    | 8          | 5.10                            | 61.2  | 67.2  | 72.2  | 76.5  | 80.2  | 83.6  | 86.6  | 89.3  |
|           |      |                    | Airside Ps | 0.07                            | 0.11  | 0.15  | 0.19  | 0.24  | 0.30  | 0.36  | 0.42  |       |
| 20        | 2    | 0.875              | 2          | 0.56                            | 63.3  | 67.2  | 70.2  | 72.5  | 74.4  | 75.9  | 77.3  | 78.4  |
|           |      |                    | 4          | 1.12                            | 84.3  | 91.8  | 97.8  | 102.7 | 106.9 | 110.4 | 113.5 | 116.2 |
|           |      |                    | 8          | 3.89                            | 100.7 | 111.9 | 121.3 | 129.2 | 136.0 | 142.1 | 147.4 | 152.2 |
|           |      |                    | 10         | 6.05                            | 104.8 | 117.1 | 127.3 | 136.2 | 143.9 | 150.7 | 156.8 | 162.2 |
|           |      |                    | Airside Ps | 0.16                            | 0.23  | 0.32  | 0.41  | 0.51  | 0.62  | 0.74  | 0.87  |       |
| Unit Size | Rows | Connection OD (in) | GPM        | Head Loss (ft-H <sub>2</sub> O) | CFM   |       |       |       |       |       |       |       |
|           |      |                    |            |                                 | 2000  | 2500  | 3000  | 3500  | 4000  | 5000  | 6000  | 7000  |
| 24        | 1    | 0.875              | 2          | 0.36                            | 48.7  | 52.0  | 54.6  | 56.7  | 58.5  | 61.3  | 63.5  | 65.3  |
|           |      |                    | 4          | 1.41                            | 60.3  | 65.7  | 70.0  | 73.7  | 76.8  | 82.0  | 86.2  | 89.6  |
|           |      |                    | 6          | 3.13                            | 65.6  | 71.9  | 77.2  | 81.8  | 85.7  | 92.3  | 97.7  | 102.3 |
|           |      |                    | 8          | 5.52                            | 68.5  | 75.6  | 81.4  | 86.6  | 91.0  | 98.6  | 104.8 | 110.0 |
|           |      |                    | Airside Ps | 0.05                            | 0.07  | 0.10  | 0.13  | 0.16  | 0.24  | 0.32  | 0.42  |       |
| 24        | 2    | 0.875              | 2          | 0.27                            | 68.4  | 72.7  | 75.9  | 78.4  | 80.5  | 83.6  | 85.9  | 87.6  |
|           |      |                    | 4          | 1.05                            | 91.7  | 100.2 | 107.0 | 112.6 | 117.3 | 124.8 | 130.6 | 135.2 |
|           |      |                    | 8          | 4.15                            | 109.9 | 122.7 | 133.4 | 142.6 | 150.5 | 163.8 | 174.4 | 183.2 |
|           |      |                    | 10         | 6.45                            | 114.3 | 128.4 | 140.2 | 150.5 | 159.4 | 174.5 | 186.7 | 197.0 |
|           |      |                    | Airside Ps | 0.11                            | 0.16  | 0.21  | 0.27  | 0.34  | 0.50  | 0.68  | 0.88  |       |

**PH SERIES HOT WATER COILS kW SELECTION DATA METRIC UNITS**

| Unit Size      | Rows | Connection OD (mm) | Water Flow (L/s)  | Head Loss (kPa) | Airflow (L/s) |      |      |      |      |      |      |      |
|----------------|------|--------------------|-------------------|-----------------|---------------|------|------|------|------|------|------|------|
|                |      |                    |                   |                 | 47            | 94   | 142  | 165  | 189  | 212  | 236  | 283  |
| 04<br>05<br>06 | 1    | 15.9               | 0.06              | 1.37            | 1.5           | 2.1  | 2.5  | 2.7  | 2.8  | 2.9  | 3.0  | 3.2  |
|                |      |                    | 0.13              | 5.26            | 1.6           | 2.3  | 2.8  | 3.0  | 3.1  | 3.3  | 3.4  | 3.7  |
|                |      |                    | 0.19              | 11.54           | 1.6           | 2.4  | 2.9  | 3.1  | 3.3  | 3.4  | 3.6  | 3.9  |
|                |      |                    | 0.25              | 20.12           | 1.6           | 2.4  | 2.9  | 3.1  | 3.3  | 3.5  | 3.7  | 4.0  |
|                |      |                    | Airsides Ps (kPa) |                 | 0.00          | 0.01 | 0.02 | 0.02 | 0.03 | 0.04 | 0.04 | 0.06 |
| 04<br>05<br>06 | 2    | 22.2               | 0.06              | 0.36            | 2.2           | 3.3  | 3.9  | 4.2  | 4.4  | 4.6  | 4.8  | 5.1  |
|                |      |                    | 0.13              | 1.37            | 2.4           | 3.7  | 4.5  | 4.9  | 5.2  | 5.5  | 5.8  | 6.2  |
|                |      |                    | 0.25              | 5.23            | 2.5           | 3.9  | 5.0  | 5.4  | 5.8  | 6.1  | 6.5  | 7.1  |
|                |      |                    | 0.38              | 11.48           | 2.5           | 4.0  | 5.1  | 5.6  | 6.0  | 6.4  | 6.8  | 7.4  |
|                |      |                    | Airsides Ps (kPa) |                 | 0.01          | 0.02 | 0.04 | 0.05 | 0.06 | 0.08 | 0.09 | 0.13 |
| Unit Size      | Rows | Connection OD (mm) | Water Flow (L/s)  | Head Loss (kPa) | Airflow (L/s) |      |      |      |      |      |      |      |
|                |      |                    |                   |                 | 236           | 283  | 330  | 378  | 472  | 566  | 661  | 755  |
| 08             | 1    | 15.9               | 0.06              | 1.88            | 3.5           | 3.8  | 4.0  | 4.1  | 4.4  | 4.7  | 4.8  | 5.0  |
|                |      |                    | 0.13              | 7.14            | 4.0           | 4.3  | 4.6  | 4.8  | 5.2  | 5.5  | 5.8  | 6.0  |
|                |      |                    | 0.19              | 15.66           | 4.2           | 4.5  | 4.8  | 5.1  | 5.5  | 5.9  | 6.2  | 6.5  |
|                |      |                    | 0.25              | 27.32           | 4.3           | 4.7  | 4.9  | 5.2  | 5.7  | 6.1  | 6.4  | 6.7  |
|                |      |                    | Airsides Ps (kPa) |                 | 0.03          | 0.04 | 0.05 | 0.06 | 0.09 | 0.12 | 0.16 | 0.20 |
| 08             | 2    | 22.2               | 0.06              | 0.51            | 5.4           | 5.8  | 6.1  | 6.4  | 6.6  | 6.8  | 7.3  | —    |
|                |      |                    | 0.13              | 1.88            | 6.6           | 7.1  | 7.6  | 8.0  | 8.3  | 8.7  | 9.7  | —    |
|                |      |                    | 0.25              | 7.14            | 7.3           | 8.1  | 8.7  | 9.2  | 9.7  | 10.1 | 11.5 | —    |
|                |      |                    | 0.38              | 15.60           | 7.7           | 8.4  | 9.1  | 9.7  | 10.3 | 10.7 | 12.4 | —    |
|                |      |                    | Airsides Ps (kPa) |                 | 0.06          | 0.08 | 0.10 | 0.13 | 0.15 | 0.18 | 0.33 | —    |

### PH SERIES HOT WATER COILS kW SELECTION DATA METRIC UNITS (continued)

| Unit Size | Rows | Connection OD (mm) | Water Flow (L/s)  | Head Loss (kPa) | Airflow (L/s) |      |      |      |      |      |      |      |
|-----------|------|--------------------|-------------------|-----------------|---------------|------|------|------|------|------|------|------|
|           |      |                    |                   |                 | 236           | 283  | 330  | 378  | 472  | 566  | 661  | 755  |
| 10        | 1    | 15.9               | 0.06              | 0.33            | 3.9           | 4.2  | 4.4  | 4.6  | 4.9  | 5.1  | 5.3  | 5.5  |
|           |      |                    | 0.13              | 1.29            | 4.6           | 4.9  | 5.2  | 5.5  | 6.0  | 6.3  | 6.6  | 6.9  |
|           |      |                    | 0.25              | 4.87            | 5.0           | 5.4  | 5.8  | 6.2  | 6.7  | 7.2  | 7.6  | 8.0  |
|           |      |                    | 0.38              | 10.70           | 5.2           | 5.7  | 6.1  | 6.4  | 7.1  | 7.6  | 8.1  | 8.4  |
|           |      |                    | Airsides Ps (kPa) |                 | 0.01          | 0.02 | 0.02 | 0.03 | 0.05 | 0.06 | 0.08 | 0.10 |
| 10        | 2    | 22.2               | 0.06              | 1.08            | 6.0           | 6.4  | 6.7  | 7.0  | 7.5  | 7.8  | 8.1  | 8.3  |
|           |      |                    | 0.13              | 4.27            | 7.4           | 8.0  | 8.6  | 9.0  | 9.8  | 10.5 | 11.0 | 11.4 |
|           |      |                    | 0.19              | 9.56            | 8.0           | 8.8  | 9.4  | 10.0 | 11.0 | 11.8 | 12.5 | 13.1 |
|           |      |                    | 0.25              | 16.98           | 8.3           | 9.2  | 10.0 | 10.6 | 11.7 | 12.6 | 13.5 | 14.1 |
|           |      |                    | Airsides Ps (kPa) |                 | 0.03          | 0.04 | 0.05 | 0.07 | 0.10 | 0.13 | 0.17 | 0.22 |
| Unit Size | Rows | Connection OD (mm) | Water Flow (L/s)  | Head Loss (kPa) | Airflow (L/s) |      |      |      |      |      |      |      |
|           |      |                    |                   |                 | 378           | 472  | 566  | 661  | 755  | 850  | 944  | 1038 |
| 12        | 1    | 22.2               | 0.13              | 1.61            | 6.5           | 7.1  | 7.5  | 7.9  | 8.3  | 8.6  | 8.8  | 9.1  |
|           |      |                    | 0.25              | 6.19            | 7.3           | 8.0  | 8.6  | 9.1  | 9.6  | 10.0 | 10.4 | 10.7 |
|           |      |                    | 0.38              | 13.54           | 7.6           | 8.4  | 9.0  | 9.6  | 10.1 | 10.6 | 11.0 | 11.4 |
|           |      |                    | 0.50              | 23.61           | 7.8           | 8.6  | 9.3  | 9.9  | 10.5 | 11.0 | 11.4 | 11.8 |
|           |      |                    | Airsides Ps (kPa) |                 | 0.02          | 0.03 | 0.04 | 0.05 | 0.06 | 0.07 | 0.09 | 0.10 |
| 12        | 2    | 22.2               | 0.13              | 0.99            | 10.0          | 10.9 | 11.6 | 12.2 | 12.7 | 13.5 | 13.8 | 14.2 |
|           |      |                    | 0.25              | 3.89            | 11.8          | 13.1 | 14.3 | 15.2 | 16.0 | 17.3 | 17.9 | 18.4 |
|           |      |                    | 0.38              | 8.64            | 12.6          | 14.1 | 15.4 | 16.5 | 17.5 | 19.2 | 19.9 | 20.5 |
|           |      |                    | 0.50              | 15.24           | 13.1          | 14.7 | 16.1 | 17.3 | 18.4 | 20.3 | 21.1 | 21.8 |
|           |      |                    | Airsides Ps (kPa) |                 | 0.04          | 0.06 | 0.08 | 0.10 | 0.13 | 0.18 | 0.22 | 0.25 |



**PH SERIES HOT WATER COILS kW SELECTION DATA METRIC UNITS**  
 (continued)

| Unit Size | Rows | Connection OD (mm) | Water Flow (L/s)  | Head Loss (kPa) | Airflow (L/s) |      |      |      |      |      |      |      |
|-----------|------|--------------------|-------------------|-----------------|---------------|------|------|------|------|------|------|------|
|           |      |                    |                   |                 | 283           | 330  | 378  | 472  | 708  | 944  | 1180 | 1416 |
| 14        | 1    | 15.9               | 0.06              | 0.60            | 5.8           | 6.4  | 6.6  | 6.9  | 7.7  | 8.3  | 8.6  | 9.0  |
|           |      |                    | 0.13              | 2.21            | 6.9           | 7.8  | 8.2  | 8.5  | 9.8  | 10.8 | 11.5 | 12.1 |
|           |      |                    | 0.19              | 10.04           | 7.6           | 8.7  | 9.2  | 9.7  | 10.9 | 12.0 | 12.9 | 13.7 |
|           |      |                    | 0.25              | 18.44           | 7.8           | 9.1  | 9.6  | 10.1 | 11.4 | 12.8 | 13.8 | 14.7 |
|           |      |                    | Airsides Ps (kPa) |                 | 0.00          | 0.01 | 0.01 | 0.01 | 0.03 | 0.05 | 0.07 | 0.09 |
| 14        | 2    | 22.2               | 0.13              | 1.17            | 10.1          | 11.5 | 12.1 | 12.7 | 14.7 | 16.0 | 17.0 | 17.7 |
|           |      |                    | 0.25              | 4.54            | 11.6          | 13.6 | 14.5 | 15.3 | 18.4 | 20.7 | 22.4 | 23.8 |
|           |      |                    | 0.38              | 10.04           | 12.2          | 14.6 | 15.5 | 16.5 | 20.2 | 23.0 | 25.1 | 26.9 |
|           |      |                    | 0.50              | 17.46           | 12.6          | 13.9 | 15.0 | 17.1 | 21.2 | 24.3 | 26.7 | 28.8 |
|           |      |                    | Airsides Ps (kPa) |                 | 0.01          | 0.02 | 0.02 | 0.03 | 0.06 | 0.10 | 0.14 | 0.19 |
| Unit Size | Rows | Connection OD (mm) | Water Flow (L/s)  | Head Loss (kPa) | Airflow (L/s) |      |      |      |      |      |      |      |
|           |      |                    |                   |                 | 472           | 708  | 944  | 1180 | 1416 | 1652 | 1888 | 1982 |
| 16        | 1    | 15.9               | 0.06              | 0.69            | 7.4           | 8.3  | 8.9  | 9.4  | 9.7  | 10.0 | 10.2 | 10.3 |
|           |      |                    | 0.13              | 2.57            | 9.3           | 10.7 | 11.8 | 12.6 | 13.3 | 13.8 | 14.3 | 14.4 |
|           |      |                    | 0.25              | 9.71            | 10.5          | 12.5 | 14.0 | 15.2 | 16.2 | 17.0 | 17.7 | 18.0 |
|           |      |                    | 0.38              | 21.28           | 11.0          | 13.3 | 15.0 | 16.3 | 17.5 | 18.4 | 19.3 | 19.6 |
|           |      |                    | Airsides Ps (kPa) |                 | 0.01          | 0.02 | 0.03 | 0.05 | 0.07 | 0.09 | 0.11 | 0.12 |
| 16        | 2    | 22.2               | 0.13              | 1.23            | 13.5          | 15.7 | 17.2 | 18.3 | 19.1 | 19.8 | 20.3 | 20.5 |
|           |      |                    | 0.25              | 4.75            | 16.3          | 19.9 | 22.4 | 24.3 | 25.9 | 27.1 | 28.3 | 28.6 |
|           |      |                    | 0.38              | 7.53            | 17.6          | 21.7 | 24.8 | 27.3 | 29.3 | 31.0 | 32.4 | 33.0 |
|           |      |                    | 0.50              | 18.56           | 18.2          | 22.8 | 26.3 | 29.0 | 31.4 | 33.3 | 35.0 | 35.6 |
|           |      |                    | Airsides Ps (kPa) |                 | 0.02          | 0.04 | 0.07 | 0.10 | 0.14 | 0.18 | 0.23 | 0.25 |

## PH SERIES HOT WATER COILS kW SELECTION DATA METRIC UNITS (continued)

| Unit Size | Rows | Connection OD (mm) | Water Flow (L/s)  | Head Loss (kPa) | Airflow (L/s) |      |      |      |      |      |      |      |
|-----------|------|--------------------|-------------------|-----------------|---------------|------|------|------|------|------|------|------|
|           |      |                    |                   |                 | 944           | 1180 | 1416 | 1652 | 1888 | 2124 | 2360 | 2596 |
| 20        | 1    | 22.2               | 0.13              | 0.99            | 12.8          | 13.7 | 14.3 | 14.9 | 15.3 | 15.8 | 16.1 | 16.4 |
|           |      |                    | 0.25              | 3.89            | 15.8          | 17.1 | 18.2 | 19.1 | 19.9 | 20.6 | 21.3 | 21.8 |
|           |      |                    | 0.38              | 8.64            | 17.2          | 18.7 | 20.1 | 21.2 | 22.2 | 23.0 | 23.8 | 24.5 |
|           |      |                    | 0.50              | 15.24           | 17.9          | 19.7 | 21.1 | 22.4 | 23.5 | 24.5 | 25.4 | 26.1 |
|           |      |                    | Airsides Ps (kPa) |                 | 0.02          | 0.03 | 0.04 | 0.05 | 0.06 | 0.07 | 0.09 | 0.10 |
| 20        | 2    | 22.2               | 0.13              | 1.67            | 18.5          | 19.7 | 20.6 | 21.2 | 21.8 | 22.2 | 22.6 | 23.0 |
|           |      |                    | 0.25              | 3.35            | 24.7          | 26.9 | 28.6 | 30.1 | 31.3 | 32.3 | 33.2 | 34.0 |
|           |      |                    | 0.50              | 11.63           | 29.5          | 32.8 | 35.5 | 37.8 | 39.8 | 41.6 | 43.2 | 44.6 |
|           |      |                    | 0.63              | 18.08           | 30.7          | 34.3 | 37.3 | 39.9 | 42.1 | 44.1 | 45.9 | 47.5 |
|           |      |                    | Airsides Ps (kPa) |                 | 0.04          | 0.06 | 0.08 | 0.10 | 0.13 | 0.15 | 0.18 | 0.22 |
| Unit Size | Rows | Connection OD (mm) | Water Flow (L/s)  | Head Loss (kPa) | Airflow (L/s) |      |      |      |      |      |      |      |
|           |      |                    |                   |                 | 944           | 1180 | 1416 | 1652 | 1888 | 2360 | 2832 | 3304 |
| 24        | 1    | 22.2               | 0.13              | 1.08            | 14.3          | 15.2 | 16.0 | 16.6 | 17.1 | 17.9 | 18.6 | 19.1 |
|           |      |                    | 0.25              | 4.21            | 17.7          | 19.2 | 20.5 | 21.6 | 22.5 | 24.0 | 25.2 | 26.2 |
|           |      |                    | 0.38              | 9.36            | 19.2          | 21.1 | 22.6 | 24.0 | 25.1 | 27.0 | 28.6 | 30.0 |
|           |      |                    | 0.50              | 16.50           | 20.1          | 22.1 | 23.8 | 25.4 | 26.6 | 28.9 | 30.7 | 32.2 |
|           |      |                    | Airsides Ps (kPa) |                 | 0.01          | 0.02 | 0.02 | 0.03 | 0.04 | 0.06 | 0.08 | 0.10 |
| 24        | 2    | 22.2               | 0.13              | 0.81            | 20.0          | 21.3 | 22.2 | 23.0 | 23.6 | 24.5 | 25.2 | 25.6 |
|           |      |                    | 0.25              | 3.14            | 26.8          | 29.3 | 31.3 | 33.0 | 34.3 | 36.5 | 38.2 | 39.6 |
|           |      |                    | 0.50              | 12.40           | 32.2          | 35.9 | 39.1 | 41.8 | 44.1 | 48.0 | 51.1 | 53.6 |
|           |      |                    | 0.63              | 19.28           | 33.5          | 37.6 | 41.1 | 44.1 | 46.7 | 51.1 | 54.7 | 57.7 |
|           |      |                    | Airsides Ps (kPa) |                 | 0.03          | 0.04 | 0.05 | 0.07 | 0.08 | 0.12 | 0.17 | 0.22 |

Heating capacity data in tables assume an entering water temperature (EWT) of 82°C, and an entering air temperature (EAT) of 18°C, which corresponds to a temperature difference of 64°C. Smaller temperature differences will result in a decrease of heating capacity. To obtain the heating capacity at another temperature difference, refer to the hot water coil notes located in the Reference Section.