

Submittal

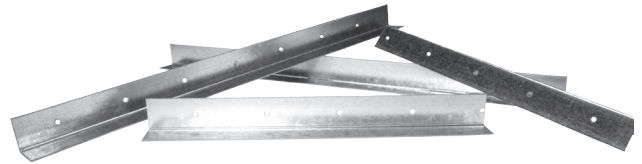
Job _____
 Location _____
 Submitted to _____
 Submittal Prepared by _____
 Approve Date _____
 Date _____

Typical installation details:

- (A) Retaining Angles:
Minimum 1½ x 1½ x 0.058 (16 Ga). Retaining angles must overlap structural opening 1" minimum and cover corners of openings
- (B) Clearance:
⅛" per linear foot both dimensions
- (C) Steel Sleeve:
- (D) Approved Fire Damper:
Curtain or Multi-Blade type.
Single section up to 36" x 36"
- (E) Secure damper to sleeve on all four sides spaced at 6" on center with:
 1. ½" long welds
 2. ¼" bolts and nuts
 3. No. 10 Screws
- (F) Secure retaining angle to sleeve using ¾" No. 10 screws spaced 3" on center and 2" from each corner.
- (G) Secure retaining angle to barrier using:
 1. 1½" long coarse drywall screws spaced 3" on center for steel or wood frame.
 2. ¾" concrete screws spaced 12" on center for concrete or masonry.

Note: For horizontal mount, the retaining angle must be attached to the top side of the ceiling/floor.

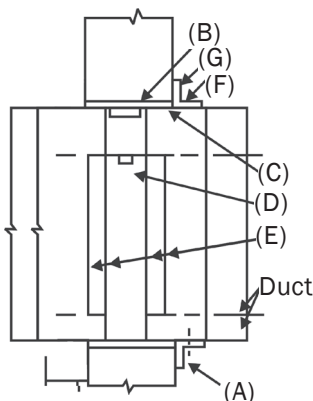
Single Sided Retaining Angle



Retaining angles are 14 and 16 gauge, 1½" x 1½" galvanized steel, and are supplied in cut-to-length sets of 4 pieces for each damper size.

Pre-punched ⅜" holes for faster fastening of angle to sleeve.

SMACNA E Class rigidity (may be used for duct reinforcement).

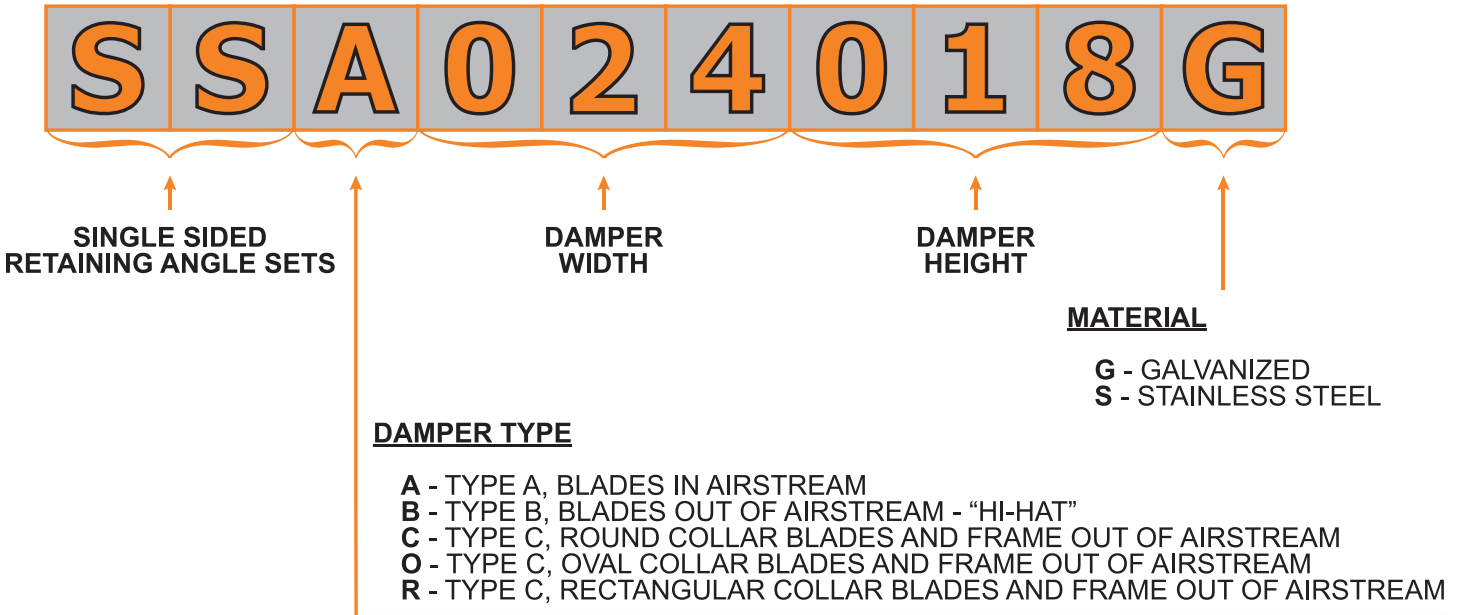


This product meets the requirements for fire dampers established by:

NFPA Standard 90A
ICC Building Codes

| Qty. | Damper Size | | Damper Type | | |
|------|-------------|---|-------------|---|---|
| | W | H | A | B | C |
| | | | | | |
| | | | | | |
| | | | | | |

Part Number Format



Submittal



AireTechnologies, Inc.
a DMI company

AireTechnologies, Inc.
 1502 Industrial Drive
 E. Monongahela, PA 15063

phone: 866.421.AIRE
 fax 724.310.1262

www.airetechnologies.com