



# TJERNLUND PRODUCTS, INC.

1601 Ninth Street • White Bear Lake, MN 55110-6794  
PHONE (800) 255-4208 • (651) 426-2993 • FAX (651) 426-9547  
Visit our web site • www.tjernlund.com



## Hot Shot™ Universal Stove Blower

### Model SB1

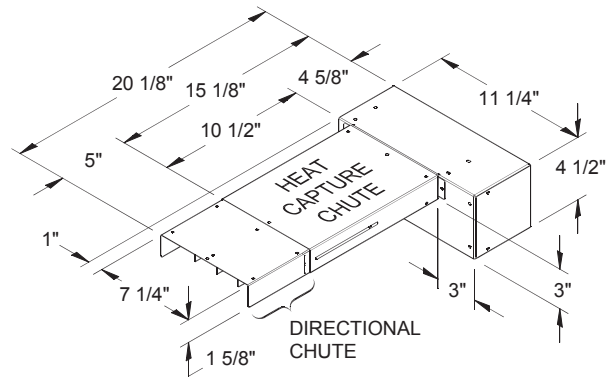
**READ OWNERS INSTRUCTIONS CAREFULLY PRIOR TO INSTALLATION.  
THESE INSTRUCTIONS MUST REMAIN WITH EQUIPMENT. DO NOT DESTROY.**

#### DESCRIPTION

The Hot Shot™ Universal Stove Blower captures and distributes radiant heat from your stove that is otherwise wasted. The Hot Shot™ silently pushes room air between the "Heat Capture Chute" and the stove top, warming it along the way and then propelling it into the room. Use the Directional Chute attachment and turning vanes to direct the warmed air left or right up to 45 degrees or straight to extend Heat Capture Chute. Easy plug in electrical, installs without tools in minutes on most stoves.

#### SPECIFICATIONS

- Volts: 120
- Hertz: 60
- Watts: 25
- Amps: 0.50 Max
- CFM: 75
- RPM: 1800
- Sound: 42dB (1.15 Sones)



#### GENERAL INFORMATION

Each Hot Shot™ Stove Blower is factory tested before shipment. After opening carton, inspect thoroughly for shipment damage. Fan should rotate freely and all electrical wires and connections should be secured. If any damage is found, notify freight carrier and your distributor immediately and file a concealed damage claim.

#### INSTALLATION

##### **⚠ WARNING**

The Stove Blower must be installed by a qualified installer in accordance with these instructions and all local codes or in their absence in accordance with the latest editions of the International Residential Code and International Electrical Code. Improper installation can create a hazardous condition such as fire, electric shock or personal injury. To reduce these risks significantly, use this unit only in the manner intended by the manufacturer. If you have questions, contact Tjernlund Products. Always disconnect the Stove Blower from its power source before installation and servicing

**IMPORTANT:** To protect the fan motor from excessive heat, mount with the blower assembly below and behind the heat shield of the stove. Mounting in any different fashion voids the warranty. Using this product on a stove without a heat shield could result in property damage and/or personal injury. **Purchase Tjernlund part 950-9200 Heat Shield Kit to use this blower on a stove not equipped with a heat shield.**

**CAUTION:** The power cord can cause property damage and/or personal injury if not routed correctly away from the stove. The SB1 power cord must be routed away from any heat source.

Install the Directional Chute on the end of the Heat Capture Chute if desired. The Directional Chute allows airflow to be directed left or right up to 45 degrees or straight to extend the length of the Heat Capture Chute. If using the Directional Chute follow steps below. If not using the Directional Chute proceed to Step 4.

1. Align the Directional Chute with the Heat Capture Chute. Insert the provided threaded stud into the holes located in both arms of the Directional Chute and through the slots in the Heat Capture Chute, (See Figure A).
2. Loosely install the provided washer and acorn nut on each threaded stud, (See Figure B). Slide the Directional Chute into the Heat Capture Chute to the end of the slots being careful not to scratch the paint and lightly hand tighten the acorn nuts.
- 3A. **STRAIGHT DISCHARGE:** For a straight discharge, simply tighten the (2) acorn nuts and proceed to Step 4.
- 3B. **ANGLED DISCHARGE:** For an angled discharge, adjust to desired angle before tightening (2) acorn nuts. **NOTE:** The inside corner of the Directional Chute should bend at the pivot point at the end of the Heat Capture Chute, (See Figure C). Adjust and tighten the acorn nut on pivot side first and then adjust to the desired angle and tighten acorn nut opposite pivot side, (See Figure D).

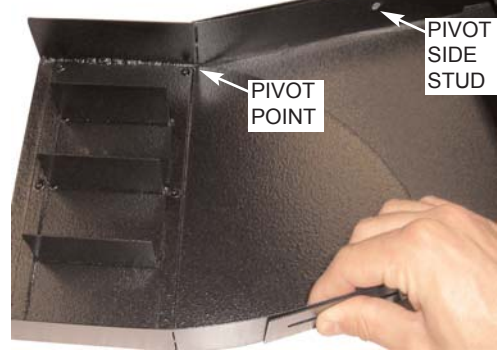
FIGURE A



FIGURE B



FIGURE C



4. Using the 3 clips on the blower housing, clip the SB1 to the stove's heat shield, (See Figure E). The SB1 is designed so that once clipped to a standard heat shield the discharge will rest on the stove top. If the stove's heat shield is too high or curved cut an opening that is 5/8" lower than stove top and just wide enough for the SB1 Heat Capture Chute to fit through. If the heat shield is too low, add a piece of sheet metal to it that is 5/8" lower than the stove top and wide enough for the (3) SB1 mounting clips. **IMPORTANT:** To protect the fan motor from excessive heat, the SB1 must be mounted with the motor housing outside the heat shield of the stove, (See Figure F). If the stove does not have a heat shield purchase Tjernlund part 950-9200 Heat Shield Kit .

FIGURE D



FIGURE E

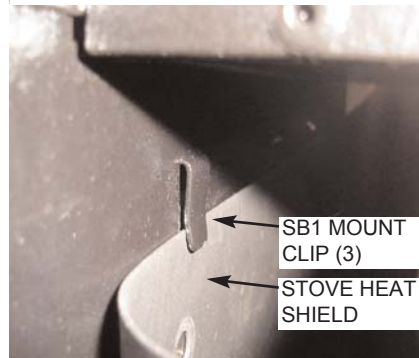


FIGURE F



5. Plug the unit in, making sure the cord of the unit is routed to avoid contact with any heat sources. On/Off switch is located in rear bottom near cord exit.

## OPERATION

The SB1 operates by a manual switch located in the rear bottom of unit. For best results, turn the blower on before fire is started. Run the blower continuously while heat is being produced by the stove. Let the blower continue to run 30 minutes after the fire has extinguished. The blower must operate the entire time heat is being produced by the stove. Operating the blower in this manner is the most efficient way to keep the spaces it serves comfortable while insuring the blower components are not over exposed to excessive heat.

## ACCESSORIES & WARRANTY

Component	Part Number
Heat Shield Kit	950-9200

### TJERNLUND LIMITED ONE YEAR WARRANTY

Tjernlund Products, Inc. warrants to the original purchaser of this product that the product will be free from defects due to faulty material or workmanship for a period of (1) year from the date of original purchase or delivery to the original purchaser, whichever is earlier. Remedies under this warranty are limited to repairing or replacing, at our option, any product which shall, within the above stated warranty period, be returned to Tjernlund Products, Inc. at the address listed below, postage prepaid. THERE ARE NO WARRANTIES WHICH EXTEND BEYOND THE DESCRIPTION ON THE FACE HEREOF, AND TJERNLUND PRODUCTS, INC. EXPRESSLY DISCLAIMS LIABILITY FOR INCIDENTAL OR CONSEQUENTIAL DAMAGES ARISING FROM THE USE OF THIS PRODUCT. THIS WARRANTY IS IN LIEU OF ALL OTHER EXPRESS WARRANTIES AND NO AGENT IS AUTHORIZED TO ASSUME FOR US ANY LIABILITY ADDITIONAL TO THOSE SET FORTH IN THIS LIMITED WARRANTY. IMPLIED WARRANTIES ARE LIMITED TO THE STATED DURATION OF THIS LIMITED WARRANTY. Some states do not allow limitation on how long an implied warranty lasts, so that limitation may not apply to you. In addition, some states do not allow the exclusion or limitation of incidental or consequential damages, so that above limitation or exclusion may not apply to you. This warranty gives you specific legal rights and you may also have other rights which may vary from State to State. Send all inquiries regarding warranty work to Tjernlund Products, Inc. 1601 9th Street, White Bear Lake, MN 55110-6794. Phone (651) 426-2993 • (800) 255-4208 • Fax (651) 426-9547 • Email fanmail@tjfans.com.